



Cambridge International AS & A Level

CANDIDATE
NAME

--

CENTRE
NUMBER

--	--	--	--	--

CANDIDATE
NUMBER

--	--	--	--



MATHEMATICS

9709/11

Paper 1 Pure Mathematics 1

May/June 2022

1 hour 50 minutes

You must answer on the question paper.

You will need: List of formulae (MF19)

INSTRUCTIONS

- Answer **all** questions.
- Use a black or dark blue pen. You may use an HB pencil for any diagrams or graphs.
- Write your name, centre number and candidate number in the boxes at the top of the page.
- Write your answer to each question in the space provided.
- Do **not** use an erasable pen or correction fluid.
- Do **not** write on any bar codes.
- If additional space is needed, you should use the lined page at the end of this booklet; the question number or numbers must be clearly shown.
- You should use a calculator where appropriate.
- You must show all necessary working clearly; no marks will be given for unsupported answers from a calculator.
- Give non-exact numerical answers correct to 3 significant figures, or 1 decimal place for angles in degrees, unless a different level of accuracy is specified in the question.

INFORMATION

- The total mark for this paper is 75.
- The number of marks for each question or part question is shown in brackets [].

This document has **20** pages.

.....

.....

.....

.....

.....

.....

.....

.....

.....

.....

(b) Hence solve the equation

$$\frac{\sin^3 \theta}{\sin \theta - 1} - \frac{\sin^2 \theta}{1 + \sin \theta} = \tan^2 \theta (1 - \sin^2 \theta)$$

for $0 < \theta < 2\pi$.

[2]

.....

.....

.....

.....

.....

.....

.....

.....

.....

.....

.....

.....

.....

.....

.....

.....

.....

.....

.....

.....

.....

.....

(b) Given instead that the length of BD is $\frac{\sqrt{3}}{2}r$, find the exact perimeter of BCD in terms of r . [4]

.....

.....

.....

.....

.....

.....

.....

.....

.....

.....

.....

.....

.....

.....

.....

.....

.....

.....

.....

.....

.....

.....

.....

.....

- (b) Show that $1 - \frac{8}{x^2 + 4}$ can be expressed as $\frac{x^2 - 4}{x^2 + 4}$ and hence state the range of f. [4]

.....

.....

.....

.....

.....

.....

.....

.....

.....

.....

.....

.....

.....

.....

.....

.....

.....

.....

.....

.....

.....

.....

.....

.....

.....

.....

.....

- (c) Explain why the composite function ff cannot be formed. [1]

.....

.....

.....

.....

.....

.....

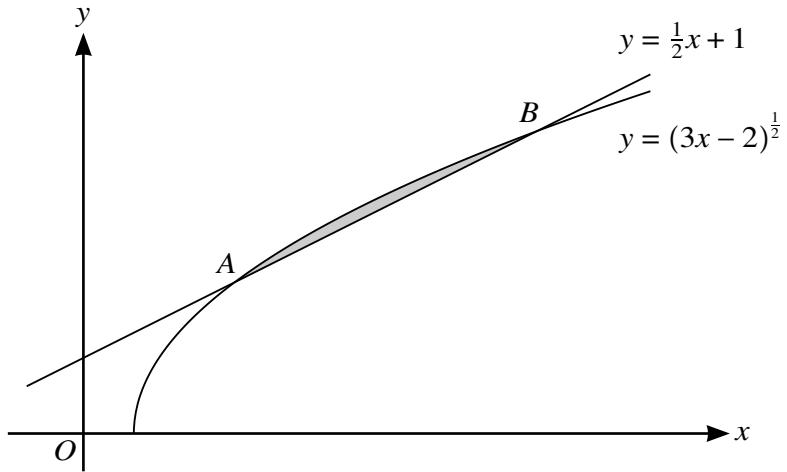
.....

.....

.....

.....

.....



The diagram shows the curve with equation $y = (3x - 2)^{\frac{1}{2}}$ and the line $y = \frac{1}{2}x + 1$. The curve and the line intersect at points *A* and *B*.

- (a) Find the coordinates of *A* and *B*. [4]

.....

.....

.....

.....

.....

.....

.....

.....

.....

.....

.....

.....

.....

.....

.....

.....

.....

.....

.....

.....

- (b) Find the set of values of the constant k for which the line with equation $y = kx - 5$ intersects the circle at two distinct points. [6]

.....

.....

.....

.....

.....

.....

.....

.....

.....

.....

.....

.....

.....

.....

.....

.....

.....

.....

.....

.....

.....

.....

.....

.....

.....

10 The equation of a curve is such that $\frac{d^2y}{dx^2} = 6x^2 - \frac{4}{x^3}$. The curve has a stationary point at $(-1, \frac{9}{2})$.

(a) Determine the nature of the stationary point at $(-1, \frac{9}{2})$. [1]

.....

.....

.....

.....

(b) Find the equation of the curve. [5]

.....

.....

.....

.....

.....

.....

.....

.....

.....

.....

.....

.....

.....

.....

.....

.....

.....

.....

.....

.....

.....

.....

.....

(c) Show that the curve has no other stationary points. [3]

.....

.....

.....

.....

.....

.....

.....

.....

.....

.....

.....

.....

.....

.....

.....

(d) A point A is moving along the curve and the y -coordinate of A is increasing at a rate of 5 units per second.

Find the rate of increase of the x -coordinate of A at the point where $x = 1$. [3]

.....

.....

.....

.....

.....

.....

.....

.....

.....

.....

.....

.....

.....

.....

.....

